

LOADTEC

515kW Caster Portable Resistive Load Bank

IPM2-0515.1



STANDARD FEATURES & HIGHLIGHTS

- ❁ 515kW INDOOR CASTER PORTABLE LOAD BANK
- ❁ ULTRA COMPACT SIZE
- ❁ MULTI-VOLTAGE OR SINGLE VOLTAGE AVAILABLE
- ❁ 5kW LOAD STEP RESOLUTION
- ❁ DIGITAL TOUCHSCREEN CONTROL SYSTEM
- ❁ INTEGRAL METERING
- ❁ PORTABLE TOUCHCOMMAND® CONTROLLER
- ❁ HEAVY-DUTY STEEL ENCLOSURE w/ Welded Base
- ❁ LIFTING EYES & FORKLIFT PROVISIONS w/ CASTERS
- ❁ INTEGRATED INTELLIGENT NETWORKING



LOADVIEW® & HSR Windows®
Remote PC Control Software †



Wi-Fi CAPABLE



LOADLINK® DLL INTERFACE
for LabVIEW® & WonderWare™ †

IPM2 STANDARD MODEL RATINGS AVAILABLE

MODEL NUMBER	3Ø kW RATINGS							1Ø 240v,1Ø	STEP RESOLUTION (NOMINAL)	WEIGHT (APPROX.)
	600v	480v	415v	400v	380v	240v	208v			
IPM2-0515.1-480DD2-5600-5	-	515	385	360	320	515	385	345	5kW	800lbs.
IPM2-0515.1-600DD2-5600-5 §	515	330	250	230	205	330	250	220	5kW	800lbs.
IPM2-0515.1-600DY2-5600-5 §	515	440	330	305	275	-	-	-	5kW	800lbs.
IPM2-0515.1-415DY2-5600-5 ‡	-	-	515	475	430	475	430	345	5kW	800lbs.
IPM2-0515.1-415V33-5600-5 ‡	-	-	515	475	430	-	-	-	5kW	800lbs.

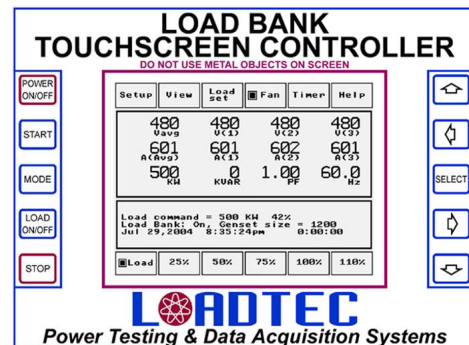
MODEL LEGEND

§ = TYPICAL CANADIAN MODEL

‡ = TYPICAL EXPORT MODEL

STANDARD GENERAL SPECIFICATION

- DIMENSIONS:** 60.0"L x 34.0"W x 52.0"H 800lbs
- RESOLUTION:** 5kW
- FREQUENCY:** 50/60Hz Standard (400Hz available)
- VOLTAGES:** AC Standard (DC voltage available)
- RATINGS:** 100% load guaranteed at rated voltage
- TOLERANCE:** ±5% overall, ±2% balance
- ENCLOSURE:** Nema 1
- CONSTRUCTION:** Galvanized Steel w/ Welded Base
- LOAD RESISTOR:** RESISTAR® - Power Resistors
- CONTROLLER:** Integral Digital TOUCHCOMMAND® Touchscreen
- METERING:** VM, AM, FM, KW, PF, KVA, KVAR, Rotation



LOADTEC
LOAD TECHNOLOGY, INC

525 Commerce Circle
Tel: 1-702-643-8750
1-800-LOADTEC
sales@loadtec.com

Mesquite, NV 89027
Fax: 1-702-643-8751
1-888-LOADTEC
www.loadtec.com

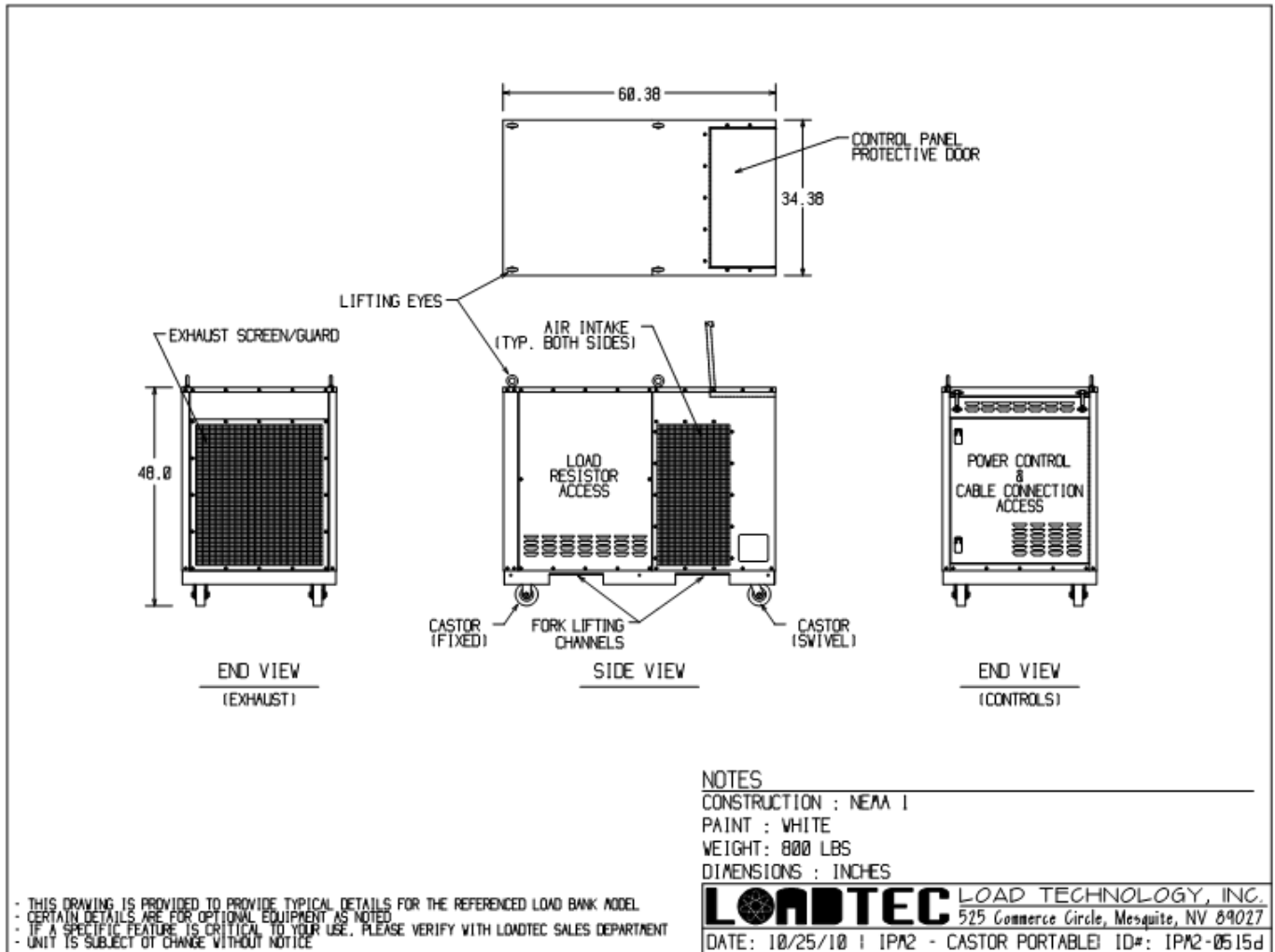
LOAD BANKS
WITH
THE DIGITAL SOLUTION

LOADTEC

515kW Caster Portable Resistive Load Bank

IPM2-0515.1

ELEVATION DRAWING



DIGITAL TOUCHCOMMAND® TOUCHSCREEN O.I.P. CONTROLLER

- ▶ Dual processor embedded control system
- ▶ Intuitive graphical Touchscreen LCD Display
- ▶ Transflective Monochrome Display for Superior Daylight Operation
- ▶ Heavy-Duty controller enclosure is shock-mounted
- ▶ Magnetic mounts installed for instantly attaching to metal surface
- ▶ Heavy mil Lexan screen protection
- ▶ Lightweight & rugged for maximum versatility & portability
- ▶ Controller detaches from integral mount for hand-held operation.



LOADTEC

LOAD TECHNOLOGY, INC.

525 Commerce Circle
Tel: 1-702-643-8750
1-800-LOADTEC
sales@loadtec.com

Mesquite, NV 89027
Fax: 1-702-643-8751
1-888-LOADTEC
www.loadtec.com

LOAD BANKS

WITH
THE DIGITAL SOLUTION

LOADTEC**515kW Caster Portable
Resistive Load Bank****IPM2-0515.1****OPTIONAL: ITEMS, EQUIPMENT, & FEATURES (MOST POPULAR)****▶ OPTION 1C: LOADVIEW® COMPUTER/REMOTE CONTROL, DATA LOGGING & SCRIPTING SOFTWARE**

The LOADVIEW® Software is a Windows® PC based control and Data Logging Package. LOADVIEW® Software provides full REMOTE load bank control and data acquisition on a PC based laptop or desktop computer via an RS-232 serial port.

▶ OPTION 2C: HIGH SPEED RESPONSE (HSR) SOFTWARE MODULE (REQUIRES OPTION 1C)

The High Speed Response Software Module (HSR) is utilized to determine source (generator) response to block load events captured using high speed data acquisition.

▶ OPTION 3C: PROTECTIVE SUNBRELLA® FORM-FIT COVER

A custom, form-fitted, heavy-duty, water-repellant protective cover is provided in a blue Sunbrella® material. This protective cover is provided with high-quality materials, double reinforced protection at every corner, double-stitched, and provided with a heavy-duty velcro closure.

▶ OPTION 4C: SINGLE PHASE CONTROL POWER

An electronic phase converter is installed and integrated with the control system to allow the 3Ø fan motor to operate at 240V, 1Ø. This phase converter soft starts the motor for small generator testing.

▶ OPTION 5C: EXTERNAL CAM-DEVICE RECEPTACLE ARRAY

[IN LIEU OF INTERNAL MECHANICAL LUG CONNECTION PROVISIONS]

An array of male, color-coded cam-devices, are provided externally with caps secured by lanyards, and are internally bussed to the main load bus to provide multiple 400amp quick-connects for the load connection cables..

▶ OPTION 6C: EXTENDED WARRANTY TERMS

Extended warranty coverage period tiers are available for purchase up to 5 years from the date of factory shipment. These optional extended warranty tiers are available in PARTS ONLY, and PARTS & LABOR versions.

MORE OPTIONS AVAILABLE: www.loadtec.com/IPM20515root.html

FOR MORE INFORMATION

For more detailed information on this load bank, please visit:

www.loadtec.com/IPM20515root.html



† DESIGNATES OPTIONAL ITEM(S) Information Subject to Change without Notice ©2012 Load Technology, Inc. All Rights Reserved

LOADTEC
LOAD TECHNOLOGY, INC525 Commerce Circle
Tel: 1-702-643-8750
1-800-LOADTEC
sales@loadtec.comMesquite, NV 89027
Fax: 1-702-643-8751
1-888-LOADTEC
www.loadtec.com**LOAD BANKS**
WITH
THE DIGITAL SOLUTION